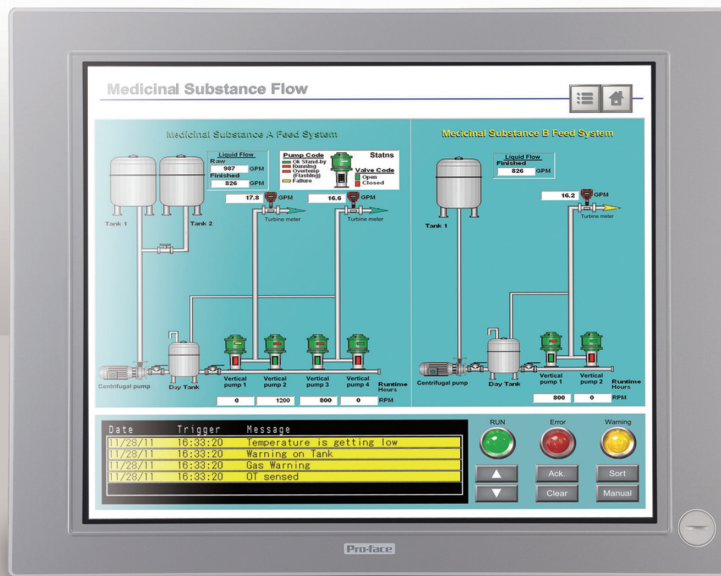


Choose the suitable CPU, OS & storage to meet your requirements.



19inch







15inch



PS4000 SERIES

PS4000 Series, a rugged, high-performance industrial Personal Computer new release

	Display	Expansion Slot	CPU	Power Supply	RAM	Operating System	Storage Device	Expansion Option	
								Slide-in Slot	I/F Port
<div>Aluminum Bezel</div> <div></div> <div>Max. 130W</div> <div>PS-4800</div> <div>Standard Interface</div> <ul style="list-style-type: none">• COM x 2• LAN x 2• CF x 1• DVI-I x 1• USB x 5	19inch SXGA (1,280×1,024)	2slots (PCI×1, PCIe×1)	Core™ 2 Duo P8400 2.26GHz	AC 100-240V	Core™ 2 Duo P8400 2 to 8GB ^{*2}	Windows® Embedded Standard 2009 (32bit)	CF 4GB	DVD Multi drive	RS-232C/422/485
<div>Aluminum Bezel</div> <div></div> <div>Max. 130W</div> <div>PS-4700</div> <div>Standard Interface</div> <ul style="list-style-type: none">• COM x 2• LAN x 2• CF x 1• DVI-I x 1• USB x 5 (4)^{*4} <div>Stainless Steel Bezel</div>	15inch XGA (1,024×768)	1slot (PCI×1)		DC ^{*1} 24V		Windows® Embedded Standard 7 Premium (32bit)	CF 8GB	HDD 250GB	
<div></div> <div>Max. 90W</div> <div>PS-4000B</div> <div>Standard Interface</div> <ul style="list-style-type: none">• COM x 2• LAN x 2• CF x 1• DVI-I x 1• USB x 5	—	5slots ^{*3} (PCI×2+PCIe×3)	Atom™ N270 1.6GHz 	DC ^{*1} 24V	Atom™ N270 1 to 3GB	Windows® XP Professional (32bit)	HDD 250GB	SSD 32GB	RS-232C/422/485
		2slots (PCI×1+PCIe×1)				Windows® 7 Ultimate (32/64bit)	SSD 32GB		DVI-D
		1slot (PCI×1)							

Low-profile, Lightweight, Low-power Consumption Embedded model

<div>Aluminum Bezel</div> <div></div> <div>Max. 36W</div> <div>PS-4700</div> <div>(Embedded only)</div> <div>Standard Interface</div> <ul style="list-style-type: none">• COM x 1• LAN x 1• CF x 1• USB x 3 (2)^{*4} <div>Stainless Steel Bezel</div>	15 inch XGA (1,024×768)	None	Atom™ Z510 1.1 GHz	DC ^{*1} 24V	1 to 2GB	Windows® Embedded Standard 2009 (32bit)	CF 4GB	—	Ethernet
									

Built-to-Order PS4000 Series

The PS4000 Series are sold Built-to-Order (BTO). You can select your desired PC and customize it in detail.*
* Please note that some patterns cannot be selected depending on the model or combination. Confirm your selection with the BTO sheet on the Pro-face web site at :

<http://www.pro-face.com/product/pc/ps4000/purchase.html>

^{*1}: Special power supply is available for conformance to marine vessel standards or for the use of UPS.
^{*2}: 6GB or 8GB is available when choosing 64-bit OS.
^{*3}: 5 slots is available when choosing Core™ 2 Duo P8400 only.
^{*4}: Stainless Steel Bezel Models have no front USB interface.

For detailed specifications, visit Pro-face web site.

<http://www.pro-face.com/product/pc/>

Five

keywords for ensuring stable use of PCs in Industrial environments

Dependability

Disk-less System for Secure Operation

SSD or CF Card with Embedded OS ensures stable operation even in locations subject to vibration or shock.

For longer CF Card life, we recommend saving log data to another storage device.



Longer Life of Parts

A large-size heat sink and intelligent fan control reduce load on the parts.*

* Fan-less model with lower operating noise and heat generation is also available.



For Sites Where Uninterrupted PC Operation is Required

All models can be used continuously for 24 hours including ones equipped with a hard disk drive.

Sites Where Power Failures Occur Frequently or the Voltage is Unstable

UPS (Uninterruptible Power Supply)*

* DC power supply model only



Stable Supply

Operating System with Long-Term Supply

A licensing agreement with Microsoft allows us to provide a long-term supply of the product.

High Performance

Provides High-speed Processing

Windows® 7 for the OS, Core™ 2 Duo for the CPU.
PCI Express for the expansion slot.

Maintainability

Easily Replaceable HDD Drive

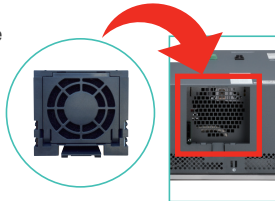
The cartridge type HDD/SSD allows easy replacement.



Sliding expansion Slot (Slide-in Slot)
HDD/SSD Slot (Slide-in Disk)

Easily Replaceable Fan

A fan kit is provided as a maintenance product to enable easy replacement by the customer.



Support in 21 Countries

Repair service is available in 21 countries.
Complying with safety standards.*

* For each safety standard certification, see the PS4000 Series specification page on the website.



Compatibility

Reusing the Resources of the HMI

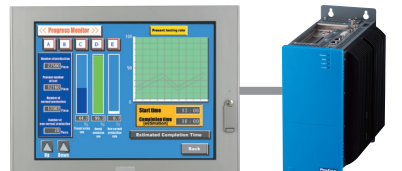
With the runtime engine WinGP, screens created on the "HMI Screen Editor Software" GP-Pro EX can be used on a PC.*

* Logic programming is not available for PS4000 series.



Industrial Touch Monitor

The PS4000 Series support connection to a Pro-face Industrial Flat Panel Monitor, FP3000 Series* using a DVI cable. (10m max.)



* Its Rev.2 or later supports DVI hot-plug-detect function.



We are always striving to bring you the high quality interface designed to provide a cohesive, evolving connection between customers and the high quality products, service and support from around the world.

We provide our best possible support for each and every individual customer.

Our Environmental Policy and Compliance with the RoHS Directive

Pro-face has taken significant steps to meet increasingly stringent requirements for environmental preservation and has sought to comply with the RoHS Directive by adopting measures to eliminate specified harmful substances from existing products and products to be manufactured and sold beginning in 2006. For details, please refer to our web site or contact our sales office in your country.

Visit our website for more information.

www.proface.com

⚠ WARNING

HAZARD OF OPERATOR INJURY, OR UNINTENDED EQUIPMENT DAMAGE

Before operating any of these products, be sure to read all related manuals thoroughly.

Failure to follow these instruction can result in death or serious injury, unintended equipment damage.

- For printing purposes, the colors in this catalog may differ from those of the actual unit.
- Actual user screens may differ from the screens shown here.
- Electric equipment should be installed, operated, serviced, and maintained only by qualified personnel. No responsibility is assumed by Digital for any consequences arising out of the use of this material.
- All product names used in this catalog are the registered trademarks or trademarks of their respective companies.
- All information contained in this catalog is subject to change without notice.

Global Headquarters

Digital Electronics Corporation
Osaka, JAPAN
Tel: +81 (0)6 6613 1101
Fax: +81 (0)6 6613 5888
www.pro-face.com
info@pro-face.com

Australia and New Zealand

Pro-face Australia
Mt. Waverley, AUSTRALIA
Tel: +61 (0)3 9550 7396
Fax: +61 (0)3 9550 7390
www.pro-face.com.au www.pro-face.co.nz
pfau@pro-face.com

China

Pro-face China International Trading Co., Ltd.
Shanghai, P. R. CHINA
Tel: +86 (0)21 6361 5175
Fax: +86 (0)21 6361 5176
www.proface.com.cn
proface@proface.com.cn

India

Pro-face India
Bangalore, INDIA
Tel: +91 80 4333 3540/3541
Fax: +91 80 4333 3222
www.proface.co.in
sales.proface@proface.co.in

North America

Pro-face America, Inc.
Ann Arbor, MI U.S.A
Tel: +1 734 477 0600
Fax: +1 734 864 7347
www.profaceamerica.com
info@profaceamerica.com

Singapore

Pro-face Singapore
TechPoint, Singapore
Tel: +65-6832-5533
Fax: +65-6415-1605
www.proface.sg
info@proface.sg

South-East Asia Pacific

Pro-face South-East Asia Pacific Co., Ltd.
Bangkok, THAILAND
Tel: +66 (0)2 617 5678
Fax: +66 (0)2 617 5688
www.proface.co.th
pfsales@proface.co.th

South Korea

Pro-face Korea Co., Ltd.
Seoul, SOUTH KOREA
Tel: +82 (0)2 2630 9850
Fax: +82 (0)2 2630 9860
www.proface.co.kr
proface@proface.co.kr

Taiwan

Pro-face Taiwan Co., Ltd.
Taipei, TAIWAN
Tel: +886 (0)2 2657 1121
Fax: +886 (0)2 2657 1021
www.proface.com.tw
proface@proface.com.tw

European Headquarters

Pro-face Europe B.V.
Hoofddorp, THE NETHERLANDS
Tel: +31 (0)23 55 44 099
Fax: +31 (0)23 55 44 090
www.proface.eu
info@proface.eu

Austria

Pro-face Europe B.V.(Austria Office)
Hagenberg, AUSTRIA
Tel: +43 7236 3343 620
FAX: +43 7236 3343 629
www.proface.at
info@proface.at

France

Pro-face France S.A.S.
Mitry-Mory, FRANCE
Tel: +33 (0)1 60 21 22 91
Fax: +33 (0)1 60 21 22 92
www.proface.fr
info@proface.fr

Germany

Pro-face Deutschland GmbH
Solingen, GERMANY
Tel: +49 (0)212 258 260
Fax: +49 (0)212 258 2640
www.proface.de
info@pro-face.de

Italy

Pro-face Italia S.p.a.
Bovisio Masciago (Milano), ITALY
Tel: +39 (0)362 59 96 1
Fax: +39 (0)362 59 96 69
www.proface.it
info@proface.it

Denmark

Pro-face Northern Europe ApS
Roskilde, DENMARK
Tel: +45 70 22 01 22
Fax: +45 70 22 01 33
www.proface.dk
info@proface.dk

Poland

Pro-face Europe B.V.(Warsaw Office)
Warszawa, POLAND
Tel: +48 (22) 465 66 62
Fax: +48 (22) 465 66 67
www.proface.pl
info@proface.pl

Russia

Pro-face Europe B.V. (Russia Office)
Saint-Petersburg, RUSSIA
Tel: +7 (812) 336 47 06
Fax: +7 (812) 336 47 18
www.pro-face.ru
info@pro-face.ru

Spain and Portugal

Pro-face España
Cardedeu (Barcelona), SPAIN
Tel: +34 (0)93 846 07 45
Fax: +34 (0)93 845 48 68
www.proface.es
info@proface.es

Sweden

Pro-face Sweden AB
Löddeköpings (Malmö), SWEDEN
Tel: +46 46 540 90 70
Fax: +46 46 71 27 90
www.proface.se
info@proface.se

Switzerland

Pro-face Schweiz GmbH
Regensdorf, SWITZERLAND
Tel: +41 (0)43 343 7272
Fax: +41 (0)43 343 7279
www.proface.ch
info@proface.ch

United Kingdom

Pro-face UK Ltd
Coventry, ENGLAND
Tel: +44 (0)2476 511288
Fax: +44 (0)2476 511499
www.proface.co.uk
info@proface.co.uk